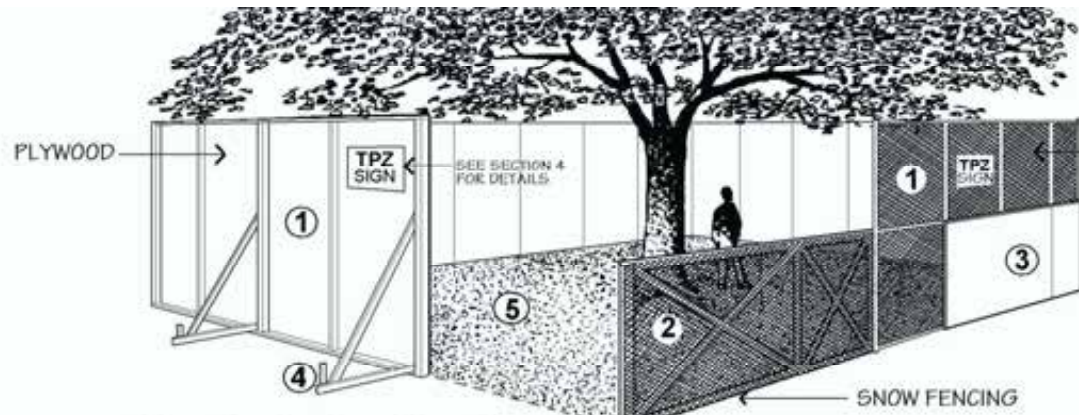


#### NOTES

- TREE PROTECTION ZONE:**  
No construction activity including grade changes, surface treatments or excavations of any kind is permitted within the area identified on this plan as a Tree Protection Hoarding (TPH). No root cutting is permitted. No storage of materials or fill is permitted within the TPH. No movement or storage of vehicles or equipment is permitted within the TPH. The area(s) identified as a TPH must remain undisturbed at all times. Any landscape plantings or sodding which are indicated within the TPH must be done by hand. No mechanical equipment is permitted for use within the TPH. Any required topdressing for sod must not exceed 2.5 cm.
- TREE PROTECTION BARRIERS:**  
Tree protection barriers for trees situated on the City road allowance where visibility must be maintained, can be 1.2 m (4ft.) high and consist of orange plastic web snow fencing on a 2" x 4" Wood frame. All supports and bracing used to secure the barrier should be located outside the TPH. All supports and bracing should minimize damage to roots outside the TPH. Where some fill or excavate has to be
- temporarily located near a tree protection barrier, plywood must be used to ensure no material enters the TPH.
- General Note:**  
The tree protection barriers must remain in effective condition until all site activities including landscaping are complete.
- ARBORICULTURAL WORK:**  
Any roots or branches which extend beyond the tree protection zone(s) indicated on this plan which require pruning, must be pruned by a Qualified Arborist. All pruning of tree roots and branches must be in accordance with good arboricultural standards.
- Concrete sidewalk to remain undisturbed until landscape site works commence.



#### Tree Protection Barriers

- Tree protection barriers must be 2.4m (8ft) high, plywood clad hoarding or an equivalent approved by Urban Forestry Services.
- Tree protection barriers for trees situated on the City road allowance where visibility must be maintained can be 1.2m (4ft.) high and consist of orange plastic web snow fencing on a wood frame made of 2" x 4"s.
- Where some excavate or fill has to be temporarily located near a tree protection barrier, plywood must be used to ensure no material enters the Tree Protection Zone.
- All supports and bracing should be outside the Tree Protection Zone. All such supports should minimize damaging roots outside the Tree Protection Barrier.
- No construction activity, grade changes, surface treatment or excavations of any kind is permitted within the Tree Protection Zone.

#### 3 TREE PROTECTION FENCING SCALE: NTS

#### TREE INVENTORY

Trees located within the work area were inspected on April 10, 2018.

Tree #	Common	Scientific	Health	Structure	Size (cm)	Height (m)	Category	Assessment	Comments	Action	Reason
1	Shorea Elm	Ulmus parviflora	Good	Fair	9.5	1.5	0	Grows adjacent to building. Epicormic growth throughout.	Not regulated under tree bylaw.	REMOVE	INTERFERES WITH CONSTRUCTION
2	Shorea Elm	Ulmus parviflora	Good	Fair	11	1.5	0	Grows adjacent to building. Epicormic growth throughout.	Not regulated under tree bylaw.	REMOVE	INTERFERES WITH CONSTRUCTION
3	Honey Locust	Gleditsia triacanthos	Fair	Fair	38	3.5	5	Recently pruned from hydro on northern side. Imbalanced canopy, weighted towards the south over place. Some epicormic growth.	City-owned tree.	PROTECT / INJURE	
4	Honey Locust	Gleditsia triacanthos	Fair	Fair	28	3.5	5	Recently pruned from hydro on northern side. Imbalanced canopy, weighted towards the south over place. Some epicormic growth. Vertical stems on southern side of trunk.	City-owned tree.	REMOVE	INTERFERES WITH CONSTRUCTION
5	Honey Locust	Gleditsia triacanthos	Fair	Fair	39.5	3.5	5	Recently pruned from hydro on northern side. Imbalanced canopy, weighted towards the south over place. Some epicormic growth. Cladding roots on southwestern side of base flares. Prominent surface roots.	City-owned tree.	PROTECT / INJURE	
6	Honey Locust	Gleditsia triacanthos	Fair	Fair	37	4.0	5	Some leaders removed to accommodate hydro. Epicormic growth. Bulge at base of trunk that grew over root flare on eastern side. Some small deadwood.	City-owned tree.	PROTECT / INJURE	
7	Honey Locust	Gleditsia triacanthos	Fair	Fair	33.5	4.0	5	Interior limbs removed for hydro clearance. Epicormic growth. Cladding roots over half of the land flares. Some small deadwood.	City-owned tree.	PROTECT / INJURE	
8	Honey Locust	Gleditsia triacanthos	Fair	Fair	32	4.0	5	Hydro pruned. Imbalanced canopy weighted over place. Some epicormic growth.	City-owned tree.	PROTECT / INJURE	
9	Honey Locust	Gleditsia triacanthos	Fair	Fair	31	4.0	5	Interior limbs removed for hydro clearance. Minor epicormic growth. Interior limbs removed for hydro clearance. One extended limb growing over road. Prominent surface roots. Some epicormic growth.	City-owned tree.	PROTECT / INJURE	
10	Honey Locust	Gleditsia triacanthos	Fair	Fair	28	4.0	5	Yucca striped growth, not as heavily pruned as the other trees. Some epicormic growth. Vertical stem on east side. Small grilles root.	City-owned tree.	REMOVE	INTERFERES WITH CONSTRUCTION
11	Honey Locust	Gleditsia triacanthos	Fair	Fair	31	4.0	5	Yucca striped growth, not as heavily pruned as the other trees. Some epicormic growth. Vertical stem on east side. Small grilles root.	City-owned tree.	REMOVE	INTERFERES WITH CONSTRUCTION
12	Honey Locust	Gleditsia triacanthos	Fair	Fair	35	4.0	5	Overhead limbs towards the road. Interior limbs removed for hydro clearance. Some epicormic growth. First crack from grade to 2.5m. Prominent surface roots growing towards the north start to penetrate a drainage pipe.	City-owned tree.	REMOVE	INTERFERES WITH CONSTRUCTION
13	Honey Locust	Gleditsia triacanthos	Fair	Fair	29	4.0	5	Some clearance for hydro. Epicormic growth.	City-owned tree.	PROTECT / INJURE	
14	Honey Locust	Gleditsia triacanthos	Fair	Fair	29	4.0	5	Imbalanced canopy due to hydro pruning. Epicormic growth.	City-owned tree.	PROTECT / INJURE	
15	Honey Locust	Gleditsia triacanthos	Fair	Fair	26	4.0	5	Interior limbs removed for hydro clearance. Epicormic growth.	City-owned tree.	PROTECT / INJURE	
16	Honey Locust	Gleditsia triacanthos	Fair	Fair	31	4.0	5	Interior limbs removed for hydro clearance. Some epicormic growth throughout.	City-owned tree.	PROTECT / INJURE	
17	Honey Locust	Gleditsia triacanthos	Fair	Fair	21	3.5	5	Some small deadwood throughout.	City-owned tree.	PROTECT / INJURE	
18	Honey Locust	Gleditsia triacanthos	Fair	Fair	20.5	3.5	5	Some small branches crossing.	City-owned tree.	PROTECT / INJURE	
19	Honey Locust	Gleditsia triacanthos	Fair	Fair	22	3.5	5	Root damage. Small deadwood.	City-owned tree.	REMOVE	INTERFERES WITH CONSTRUCTION
20	Honey Locust	Gleditsia triacanthos	Fair	Fair	22.5	3.5	5	Root flare exposed, possible soil erosion.	City-owned tree.	REMOVE	INTERFERES WITH CONSTRUCTION
21	Honey Locust	Gleditsia triacanthos	Fair	Fair	17	3.0	5	Reaction wound at base of tree causing a hole. 'Chimney'.	City-owned tree.	REMOVE	INTERFERES WITH CONSTRUCTION
22	Honey Locust	Gleditsia triacanthos	Fair	Fair	23.5	3.5	5	Reaction wound at base of tree causing a hole. 'Chimney'.	City-owned tree.	REMOVE	INTERFERES WITH CONSTRUCTION
23	Honey Locust	Gleditsia triacanthos	Fair	Fair	22.5	3.5	5	Reaction wound at base of tree causing a hole. 'Chimney'.	City-owned tree.	REMOVE	INTERFERES WITH CONSTRUCTION
24	Honey Locust	Gleditsia triacanthos	Fair	Fair	26	3.5	5	Some epicormic growth throughout.	City-owned tree.	PROTECT / INJURE	
25	Honey Locust	Gleditsia triacanthos	Fair	Fair	25	3.5	5	Canopy comes into contact with window frame towards the north. Small deadwood. Decay underneath bark on southern side of trunk.	City-owned tree.	PROTECT / INJURE	
26	Honey Locust	Gleditsia triacanthos	Fair	Fair	22.5	3.5	5	Large pruning wound. 'Tee' towards the south. Epicormic growth.	City-owned tree.	PROTECT / INJURE	
27	Honey Locust	Gleditsia triacanthos	Fair	Fair	21.5	3.5	5	Some small deadwood. Epicormic growth throughout.	City-owned tree.	PROTECT / INJURE	
28	Honey Locust	Gleditsia triacanthos	Fair	Fair	25	3.5	5	Prominent surface roots growing towards the north.	City-owned tree.	PROTECT / INJURE	
29	Honey Locust	Gleditsia triacanthos	Fair	Fair	20	3.0	5	Some small deadwood.	City-owned tree.	PROTECT / INJURE	
30	Honey Locust	Gleditsia triacanthos	Fair	Fair	23.5	3.5	5	Some frost cracks on trunk.	City-owned tree.	PROTECT / INJURE	
31	Honey Locust	Gleditsia triacanthos	Fair	Fair	25	3.5	5	Plastic bag in canopy. Small deadwood throughout.	City-owned tree.	REMOVE	INTERFERES WITH CONSTRUCTION

Category #  
0: Tree NOT regulated under City of Hamilton Tree Bylaw  
1: Trees with diameters of 10cm or more, situated on private property on the subject site.  
2: Trees with diameters of 10cm or more, situated on private property, within an object site.  
3: Trees of all diameters situated on City-owned public land within an object site.  
4: Trees of all diameters situated within the City road allowance adjacent to the subject site.  
5: Trees of all diameters situated within the City road allowance adjacent to the subject site.  
6: Trees of all diameters situated within the City road allowance adjacent to a neighbouring property.

#### 2 TREE INVENTORY AND ANALYSIS SCALE: NTS

#### NOTES

The following note shall apply to all drawings and associated documents:  
Copyright of this drawing and design is reserved by the Designer. The drawing and all associated documents are an instrument of service by the Designer. The drawing and all information contained therein may not be reproduced in whole or in part without prior written permission of the Designer.  
These Contract Documents are the property of the Landscape Architect. The Landscape Architect bears no responsibility for the interpretation of these documents by the Contractor. Upon written application the Landscape Architect will provide written clarification or supplementary information regarding the intent of the Contract Documents. The Landscape Architect will review Shop Drawings submitted by the Contractor for design conformance only.  
Drawings are not to be scaled for construction. Contractor to verify all existing conditions and dimensions required to perform the work and report any discrepancies with the Contract Documents to the Landscape Architect before commencing work.  
Positions of exposed or finished mechanical or electrical devices, fittings, and fixtures are indicated on Landscape Architectural drawings. The locations shown on the Landscape Architectural drawings govern over the Mechanical and Electrical drawings. Those items not clearly located will be located as directed by the Landscape Architect. These drawings are not to be used for construction unless noted below as "Issued for Construction".  
All work to be carried out in conformance with the Code and Bylaws of the authorities having jurisdiction.  
The Designer of these plans and specifications gives no warranty or representation to any party about the constructability of the represented by them. All contractors or subcontractors must satisfy themselves when bidding and at all times that they can properly construct the work represented by these plans.

#### LEGEND

- EXISTING TREE TO REMAIN
- EXISTING TREE TO BE REMOVED
- TREE PROTECTION HOARDING
- APPROXIMATE EXTENT OF PROPOSED BUILDING

#### ISSUE

10			
9			
8			
7			
6			
5			
4			
3			
2	2018-06-29	ISSUED FOR OPA / ZBA	
1	2018-06-18	ISSUED FOR ZBA COORDINATION	



Janet  
Rosenberg  
& Studio  
Landscape Architecture and Urban Design  
416 656 8665 | 416 656 5756 www.jrstudio.ca  
148 Kenwood Avenue, Toronto Ontario M6C 2S3 Canada

#### SLATE ASSET MANAGEMENT

#### CORKTOWN

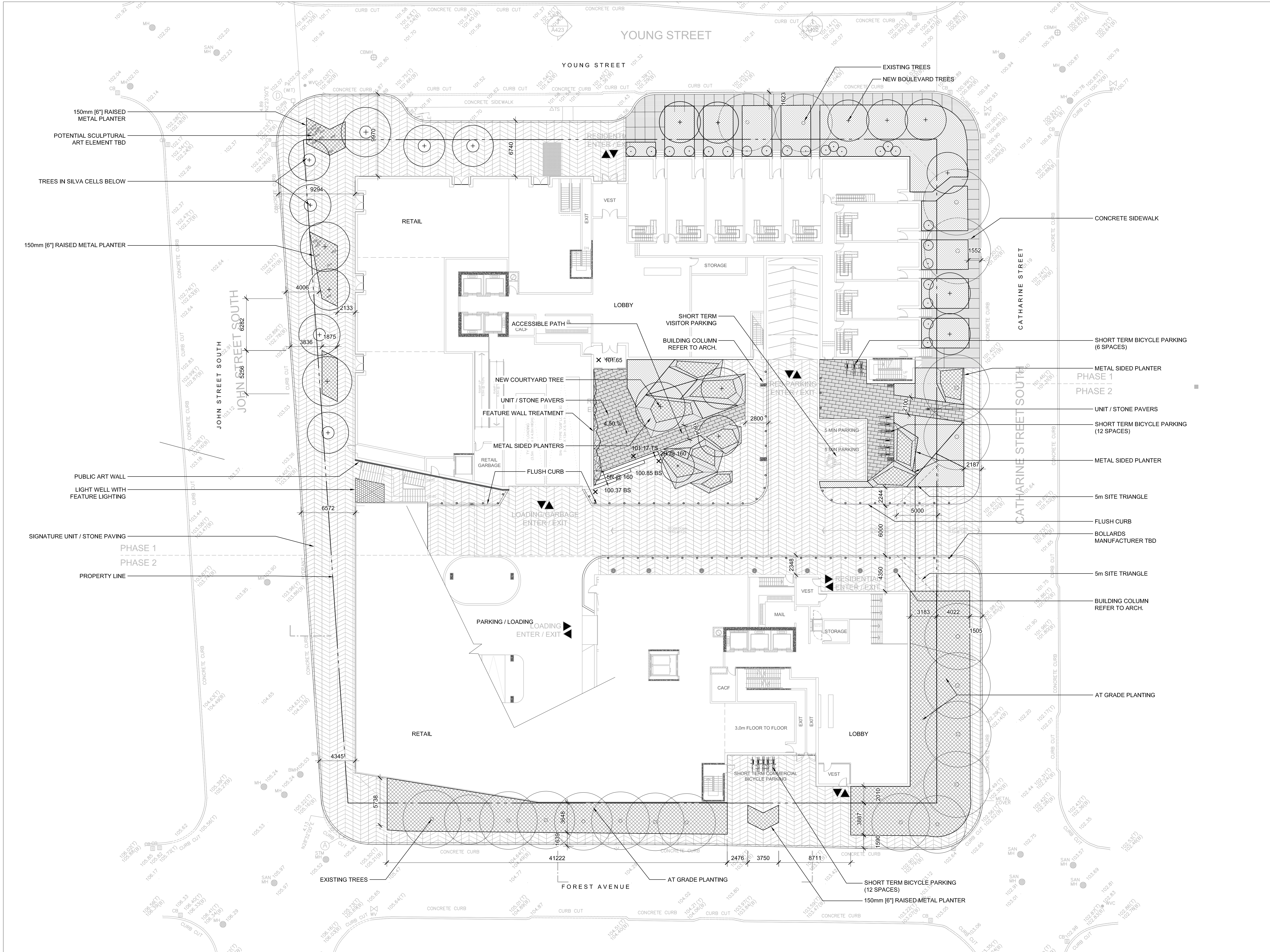
211 John St. South, Hamilton ON

#### TREE PROTECTION AND REMOVALS PLAN

SCALE: AS NOTED  
DRAWN: TD  
CHECKED: JH  
PROJECT NUMBER: 18-013  
DRAWING DATE: 2018-05-20

# L001





**NOTES**

The following note shall apply to all drawings and associated documents:

Copyright of this drawing and design is reserved by the Designer. The drawing and all associated documents are an instrument of service by the Designer. The drawing and all associated documents may not be reproduced in whole or in part without prior written permission of the designer.

These Contract Documents are the property of the Landscape Architect. The Landscape Architect bears no responsibility for the interpretation of these documents by the Contractor. Upon written application the Landscape Architect will provide written clarification or supplementary information regarding the intent of the Contract Documents. The Landscape Architect will review Shop Drawings submitted by the Contractor for design conformance only.

Drawings are not to be scaled for construction. Contractor to verify all existing conditions and dimensions required to perform the work and report any discrepancies with the Contract Documents to the Landscape Architect before commencing work.

Positions of exposed or finished mechanical or electrical devices, fittings, and fixtures are indicated on Landscape Architectural drawings. The locations shown on the Landscape Architectural drawings govern over the Mechanical and Electrical drawings. Those items not clearly located will be located as directed by the Landscape Architect.

These drawings are not to be used for construction unless noted below as "Issued for Construction".

All work to be carried out in conformance with the Code and Bylaws of the authorities having jurisdiction.

The Designer of these plans and specifications gives no warranty or representation to any party about the constructability of the represented by them. All contractors or subcontractors must satisfy themselves when bidding and at all times that they can properly construct the work represented by these plans.

- LEGEND**
- EXISTING TREE
  - PROPOSED TREE
  - SHRUB PLANTING
  - GROUNDCOVER PLANTING

**ISSUE**

10		
9		
8		
7		
6		
5		
4		
3		
2	2018-06-29	ISSUED FOR OPA / ZBA
1	2018-06-16	ISSUED FOR ZBA COORDINATION

Janet Rosenberg & Studio

Landscape Architecture and Urban Design

416 656 6665 F 416 656 5756 www.jrstudio.ca

148 Kenwood Avenue, Toronto Ontario M6C 2S3 Canada

**SLATE ASSET MANAGEMENT**

**CORKTOWN**

211 John St. South, Hamilton ON

**LANDSCAPE LAYOUT PLAN**

SCALE: 1:200

DRAWN: TD

CHECKED: JH

PROJECT NUMBER: 18-013

DRAWING DATE: 2018-05-20

L100