
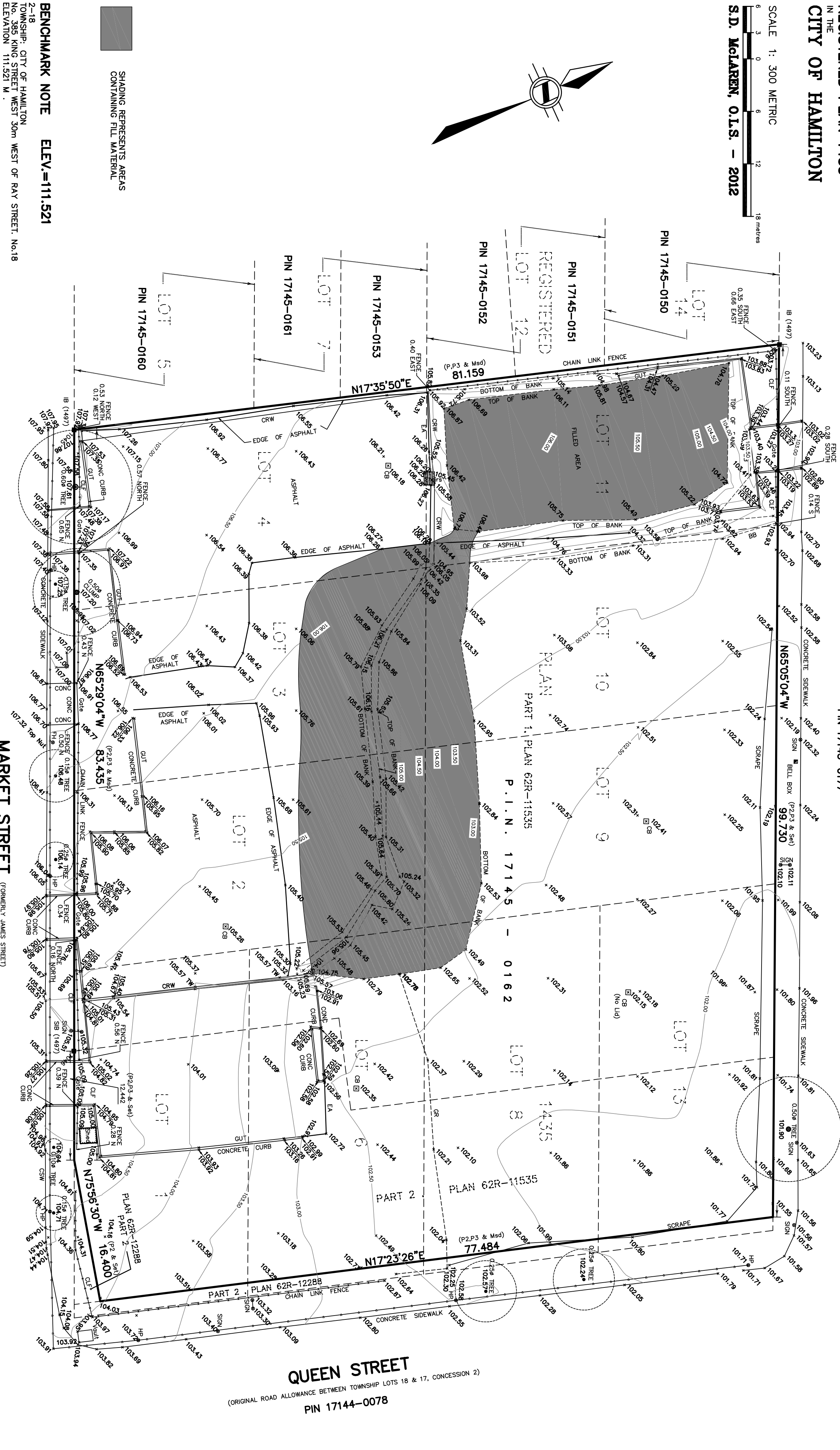
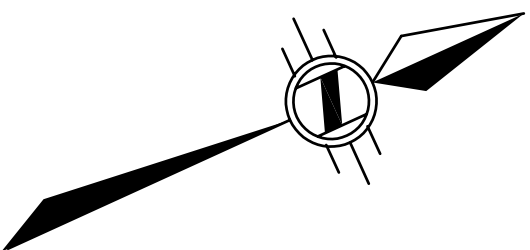


**SITE ALTERATION PLAN**  
 OF PART OF  
**LOTS 1, 6, 8 & 13**  
 AND  
**ALL OF LOTS 2, 3, 4, 9, 10 & 11**  
 REGISTERED PLAN 1435  
 IN THE  
**CITY OF HAMILTON**

**NAPIER STREET**  
 (ESTABLISHED BY REGISTERED PLAN 1435)  
 PIN 17145-0177

SCALE 1: 300 METRIC  
  
**S.D. McLAREN, O.L.S. - 2012**



**BENCHMARK NOTE** ELEV.=111.521

2-18  
 TOWNSHIP- CITY OF HAMILTON  
 No. 385 KING STREET WEST 30m WEST OF RAY STREET, No.18  
 ELEVATION 111.521 M.

SHADING REPRESENTS AREAS  
 CONTAINING FILL MATERIAL

**LEGEND:**

- |   |                   |     |                         |
|---|-------------------|-----|-------------------------|
| □ | DEPOTES           | CB  | CATCH BASIN             |
| ■ | MONUMENT SET      | CRW | CONCRETE RETAINING WALL |
| ▣ | IRON BAR          | FB  | FIRE HYDRANT            |
| ▤ | STANDARD IRON BAR | FB  | EDGE OF BANK            |
| ▥ | CHAIN LINK FENCE  | EA  | EDGE OF ASPHALT         |
| ▦ | GRAVEL            | HP  | HYDRO POLE              |
| ▧ | CONCRETE SIDEWALK | HP  | TOP OF WALL             |
| ▨ | CONCRETE SIDEWALK | HP  | TOP OF WALL             |

**METRIC NOTE**

DISTANCES SHOWN ON THIS  
 PLAN ARE IN METRES AND  
 CAN BE CONVERTED TO FEET  
 BY DIVIDING BY 0.3048

**BEARING NOTE:**

BEARINGS ARE ASTRONOMIC AND ARE  
 REFERRED TO THE

**MARKET STREET**  
 (FORMERLY JAMES STREET)  
 PIN 17145-0176

**QUEEN STREET**  
 (ORIGINAL ROAD ALLOWANCE BETWEEN TOWNSHIP LOTS 18 & 17, CONCESSION 2)  
 PIN 17144-0078

DATE MARCH 23, 2012

S. DAN McLAREN, O.L.S.

© S.D. McLAREN, O.L.S. - 2012. NO PERSON MAY COPY  
 REPRODUCE, DISTRIBUTE OR ALTER THIS PLAN IN WHOLE OR IN  
 PART WITHOUT THE WRITTEN PERMISSION OF S.D. McLAREN, O.L.S.

**A.T. McLaren Limited**  
 LEGAL AND ENGINEERING SURVEYS  
 69 JOHN STREET SOUTH, SUITE 200  
 HAMILTON, ONTARIO, L8N 2B9  
 PHONE (905) 527-8559 FAX (905) 527-0032

Drawn	MS	Scale	As Shown
Checked	MS	Dwg No.	35890-1
Over	MS		