

TOPOGRAPHIC SURVEY OF
PART OF LOT 55
CONCESSION 1
 (FORMERLY TOWNSHIP OF ANCASTER)
CITY OF HAMILTON
 REGIONAL MUNICIPALITY OF HAMILTON-WENTWORTH
 SCALE 1 : 250

SPEIGHT, VAN NOSTRAND & GIBSON LIMITED
 ONTARIO LAND SURVEYORS
 2015

THE REPRODUCTION, ALTERATION OR USE OF THIS PLAN, IN WHOLE OR IN PART, WITHOUT THE EXPRESS PERMISSION OF SPEIGHT, VAN NOSTRAND & GIBSON LIMITED IS STRICTLY PROHIBITED.

ELEVATION NOTE

ELEVATIONS ARE GEODETIC AND ARE DERIVED FROM THE CITY OF HAMILTON BENCHMARK No. 0011965U030, also known as 65U030.

LOCATION :
 PRINCE PHILIP SCHOOL AT SOUTHEAST CORNER OF WHITNEY AVENUE AND RIFLE RANGE ROAD, TABLET IN NORTH CONCRETE FOUNDATION WALL OF NORTHWESTERLY SECTION OF BUILDING, 61 CM FROM NORTHEAST CORNER AT STEPS TO EASTERLY SIDE ENTRANCE, 91 CM BELOW BRICK, SLIGHTLY ABOVE ROAD LEVEL.
 ELEVATION:
 PUBLISHED ELEVATION = 101.028 metres.

BEARING NOTE

BEARINGS SHOWN HEREON ARE ASTRONOMIC AND ARE REFERRED TO THE NORTHERLY LIMIT OF PART 5 AS SHOWN ON PLAN 62R-11818 HAVING A BEARING OF N88°23'30"W.

METRIC

DISTANCES SHOWN ON THIS PLAN ARE IN METRES AND CAN BE CONVERTED TO FEET BY DIVIDING BY 0.3048.

LEGEND

DENOTES	SURVEY MONUMENT FOUND
□	SURVEY MONUMENT PLANTED
WIT	WITNESS MONUMENT
SIB	STANDARD IRON BAR
SSIB	SHORT STANDARD IRON BAR
IS	IRON BAR
CC	CUT CROSS
N,S,E,W	NORTH, SOUTH, EAST, WEST
OU	ORIGIN UNKNOWN
655	J. T. PETERS, O.L.S.
912	A. J. CLARKE, O.L.S.
PLAN 62R-11818	PLAN 62R-11818
D1	INST. No. 16180HL
MH	MANHOLE
SMH	SEWER MANHOLE
WMH	WATER MANHOLE
HMH	HYDRO MANHOLE
BMH	BELL MANHOLE
CB	CATCH BASIN
FH	FIRE HYDRANT
WV	WATER VALVE
GV	GAS VALVE
CHP	HAND WELL
WHP	CONCRETE HYDRO POLE
WHP	WOODEN HYDRO POLE
CLS	CONCRETE LIGHT STANDARD
MLS	METAL LIGHT STANDARD
BRP	BREATHING PIPE
B	BOLLARD
G	GUTTER
OH	OVERHEAD WIRE
FF	FINISHED FLOOR
○	DECIDUOUS TREE
○	CONIFEROUS TREE
○	GROUND ELEVATION
○	TOP OF BUILDING ELEVATION

SURVEYOR'S CERTIFICATE

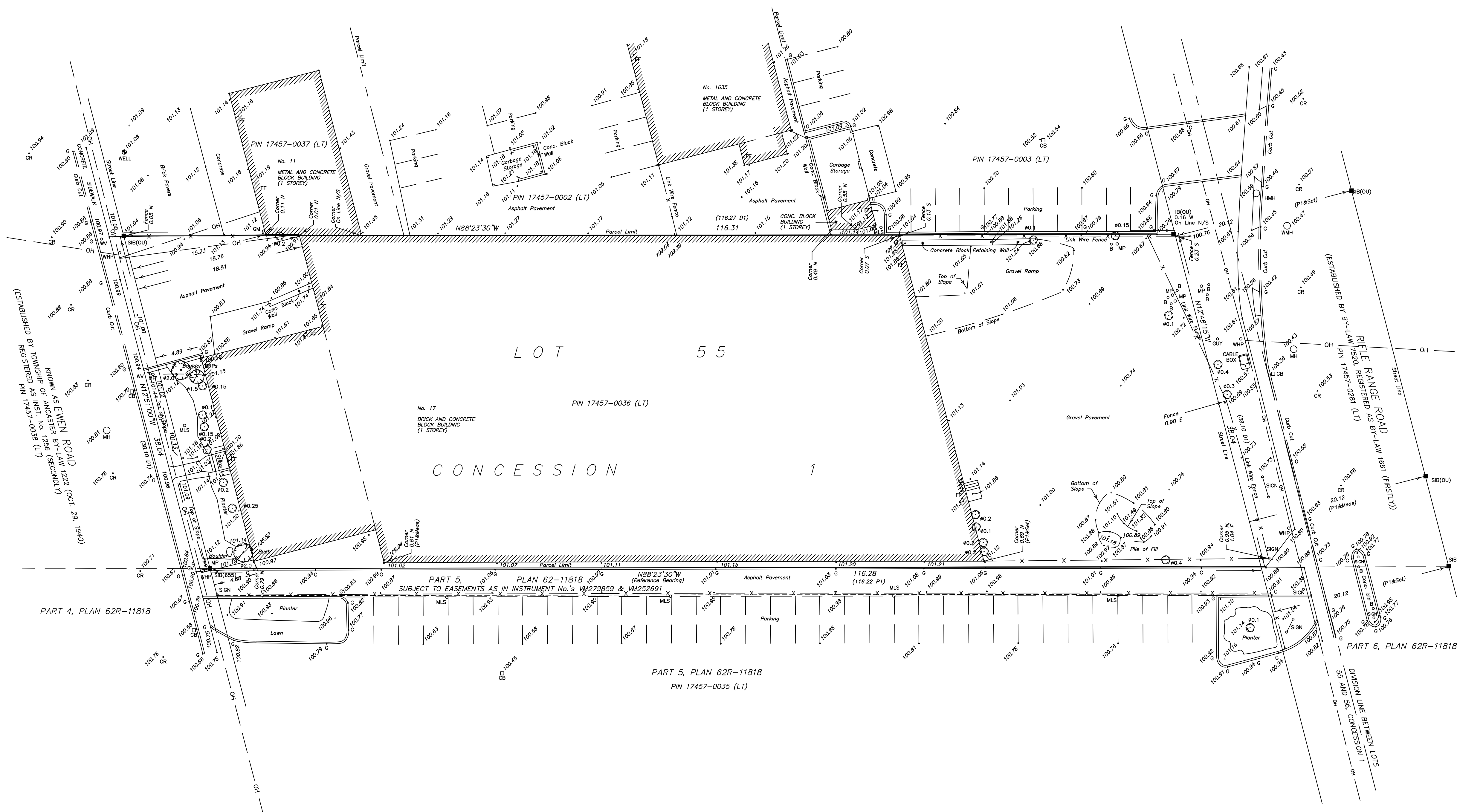
I CERTIFY THAT :
 1. THIS SURVEY AND PLAN ARE CORRECT AND IN ACCORDANCE WITH THE SURVEYS ACT, THE SURVEYORS ACT AND THE REGULATIONS MADE UNDER THEM.
 2. THE SURVEY WAS COMPLETED ON JANUARY 26, 2015.

DATE : JANUARY 27, 2015

ADAM J. WERRELL
 ONTARIO LAND SURVEYOR

SPEIGHT, VAN NOSTRAND & GIBSON LIMITED
 ONTARIO LAND SURVEYORS
 750 OAKDALE ROAD, Units 65 & 66
 TORONTO, ONTARIO M5N 2Z4
 TEL. 416 749-SVNG(7864) FAX 416 749-7866
 E-MAIL: toronto@svng.on.ca

DRAWN : F. P. B.	FILE NAME : A1400353.DWG
CHECKED : A. W.	PLOT SCALE : MET. 1=0.25
JOB No. : 140-0353	PLOTTED : Jan. 27, 2015
REF. No. : 1-Con 1 Ancaster	UPDATED :



1-Con 1 Ancaster